

Canon

DR-SERIES

HIGH-SPEED DOCUMENT SCANNERS



SCAN DOCUMENTS QUICKLY AND EFFICIENTLY

DR-Series Scanners deliver:

- Reliable Paper-Handling
- Superior Image Quality
- Ease-of-Use
- Industry-Leading Price-Performance
- Fast Scanning Speeds
- Innovative Design
- Versatile Scanning Capabilities

EASY INTEGRATION AND COMPATIBILITY

CapturePerfect® 3.0

CapturePerfect 3.0 is a comprehensive document imaging software application that delivers out-of-the-box functionality with every DR-Series Scanner. This ISIS® compliant imaging software was designed to maximize scanning performance as well as streamline tasks for viewing, presenting, sending, saving, and printing office documents. CapturePerfect automates the image capture process and produces consistent, high-quality scans from even the most difficult original documents.

Solution Ally Partners

Helping to ensure streamlined integration, many of the industry's leading software companies have tested Canon's DR-Series Scanners for compatibility with their products. With this compatibility, customers enjoy the reliability and benefits of a complete document management solution. Moreover, this provides our customers the flexibility of selecting a hardware product that will operate effectively with the software applications they're currently using or implementing. For the most up-to-date list, please visit Canon U.S.A.'s Web site at www.usa.canon.com, and click on the page of the specific DR-Series Scanner in which you're interested.

INVESTMENT PROTECTION

Service and Support

Canon DR-Series Scanners are designed to provide customers with a rewarding ownership experience. These products are supported nationwide through a network of factory-trained and authorized Canon service providers. Our providers attend Canon training classes on the latest products, service methods, and tools. They also have the latest information about the products they service, including technical documentation, service Web site, and technical support hotline.

Canon CarePAK™

Canon CarePAK Extended Service Plan helps ensure minimum downtime, even beyond the standard Canon U.S.A. limited warranty period. Including the Advanced Exchange Program, Canon CarePAK offers a convenient way to obtain a replacement DR-Series Scanner before sending yours back to Canon for repair or required service. Canon CarePAK is an option available for the DR-1210C, DR-2050C, DR-2050SP, DR-2580C, DR-4010C, and ScanFront 220/220P scanners.



ScanFront 220/220P



SCAN TO SHARE THROUGH THE NETWORK

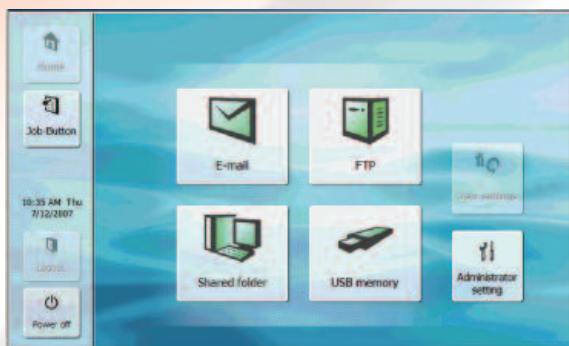
Key Features

Type:	Stand-alone Color Network Scanner
Functions:	Scan-to-E-mail, Scan-to-Folder, Scan-to-FTP, Scan-to-USB Memory
Scanning Speeds:	Up to 26 ppm (35 ipm)*
Scanning Modes:	Black and White, Grayscale, Color
Operation Panel:	8.5" TFT LCD with Touch-Panel
Interface:	LAN 10Base-T/100Base-TX Connector
Daily Duty Cycle:	Approximately 1,000 Scans

Network-Ready, Safe, and Secure. Ultra-Compact, Easy to Use and Manage.

Expanding productivity even further, the Canon ScanFront 220/220P scanners are in a new class of their own in terms of scanning innovation and workflow efficiency. These sleek, extremely compact stand-alone units can plug directly into your office network to deliver direct network scanning and sending. The ScanFront 220/220P scanners offer state-of-the-art imaging technology and a user-friendly interface with full touch-screen convenience.

- Letter-sized color duplex network scanner
- Large 8.5 inch color touch-screen
- Fast, high-quality, reliable 26 pages per minute (35 ipm)*
- Scan directly to e-mail, shared folder, FTP, and USB memory
- Personal, shared and LDAP Address Books
- Customizable Job buttons
- Easy remote scanner management and robust security features



Easy-to-Use Touch-Panel Operation

- The ScanFront 220/220P scanners are extremely easy to use. With an intuitive GUI (Graphic User Interface) on their easy-view 8.5-inch touch-panel display, users will find navigating scan and send options easy.
- **Scan-to-E-mail**
Send scanned images to a designated e-mail address, with customizable subject line and message.
- **Scan-to-Shared Folder**
Send scanned images to a shared folder on a PC or server connected to the network.
- **Scan-to-FTP**
Send scanned images to a specific folder on an FTP server.
- **Scan-to-USB Memory**
Send scanned images to USB memory inserted in the USB slot of the ScanFront 220/220P devices.

Item Code

2263B002AA	ScanFront 220
2338B002AA	ScanFront 220P

Optional Accessories and Service

2445B001AA	Exchange Roller Kit for ScanFront 220/220P
2445B002AA	Two-Year CarePak (Exchange Program) for ScanFront 220
2445B003AA	Two-Year CarePak (Exchange Program) for ScanFront 220P

* Examples based on typical settings, rated in pages/images per minute with letter-sized documents at 200 dpi. Actual processing speeds may vary based on PC performance and application software.

DR-1210C



MAXIMUM FLEXIBILITY FOR LIMITLESS PRODUCTIVITY

Key Features

Scanning Speeds:	Up to 12 ppm*
Scanning Modes:	Black and White, Grayscale, Color
Optical Resolution:	600 dpi
Interface:	Hi-Speed USB 2.0
Feeder Capacity:	35 Sheets
Daily Duty Cycle:	Approximately 400 Scans
Warranty:	One-Year Limited Warranty

Canon Advantages

- Combination Flatbed and ADF capabilities for scanning a variety of sources from business cards to mixed batches
- High-precision feeding system with industry-leading roller durability
- User-friendly control panel with customizable and preset Scan-To-Job buttons for efficient, one-touch operation
- Convert and organize contact information with business card scanning
- 3-Dimensional Color Correction technology for accurate color reproduction

Bundled Software

- ISIS®/TWAIN Drivers
- Canon CapturePerfect® 3.0
- Adobe® Acrobat® 8.0 Standard
- Nuance OmniPage® SE 4
- Presto! BizCard Reader 5

Item Code

1211B002 DR-1210C

Optional Accessories and Service

1541B001	Feed Roller Kit for DR-1210C
1541B002	Separation Pad for DR-1210C
1541B008	Two-Year CarePAK (Exchange Program) for DR-1210C

* Examples based on typical settings, rated in pages/images per minute with letter-sized documents at 300 dpi. Actual processing speeds may vary based on PC performance and application software.



DR-2050C



DESIGNED FOR TIGHT BUDGETS AND LIMITED WORKSPACES

Key Features

Scanning Speeds:	Up to 20 ppm or 40 ipm*
Scanning Modes:	Black and White, Grayscale, Color
Optical Resolution:	600 dpi
Interface:	Hi-Speed USB 2.0
Feeder Capacity:	50 Sheets
Daily Duty Cycle:	Approximately 700 Scans
Warranty:	One-Year Limited Warranty

Canon Advantages

- High-precision roller system that helps deliver smooth, jam-free feeding
- Fast OCR scanning and searchable PDF creation
- Streamlined, space-saving design and lightweight at only 5 lb.
- Folio Mode for occasional 11" x 17" scanning
- Long Document Mode for documents up to 39" long

Bundled Software

- ISIS®/TWAIN Drivers
- Canon CapturePerfect® 3.0
- Adobe® Acrobat® 8.0 Standard
- Nuance OmniPage® SE 4

Item Code

0433B002 DR-2050C

Optional Accessories and Service

1029V680	Soft Carrying Case for DR-2050C
7982A001	Exchange Roller Kit for DR-2050C
7982A006	Two-Year CarePAK (Exchange Program) for DR-2050C

* Examples based on typical settings, rated in pages/images per minute with letter-sized documents at 200 dpi unless specified. Actual processing speeds may vary based on PC performance and application software.



DR-2050SP



PORTABLE MULTI-INPUT SCAN-TO-PROJECTOR FUNCTIONALITY

Key Features

Standard Scanning Mode (PC):	Same as DR-2050C
"Scan-to-Projector" Mode Output Signal:	SXGA (1,280 x 1,024), XGA (1,024 x 768), SVGA (800 x 600); Automatic
Interface:	Analog RGB Output, USB Memory Slot, USB 2.0 (Scanning Mode only), Infrared Communication, Remote Control Infrared
Included Accessories:	Remote Control, Batteries, VGA Cable

Canon Advantages

- Impressive double-duty scanner with "Scan-to-Projector" functionality
- Award-winning DR-2050C scanner features when connected to a PC
- Multiple input presentation tool (Scan, USB, Portable Infrared Device)
- Remote-control-operated for enhanced presentation capabilities
- Ultra-compact and portable design

Bundled Software

- ISIS®/Twain Drivers
- Canon CapturePerfect® 3.0
- Adobe® Acrobat® 8.0 Standard
- Nuance OmniPage® SE 4

Item Code

2099B002 DR-2050SP

Optional Accessories and Service

1029V680	Soft Carrying Case for DR-2050SP**
7982A001	Exchange Roller Kit for DR-2050SP
7982A010	Two-Year CarePAK (Exchange Program) for DR-2050SP

** Same as DR-2050C carrying case
Note: DR-2050SP shown with optional projector.



DR-2580C



COMPACT, PORTABLE POWER

Key Features

Scanning Speeds:	Up to 25 ppm or 50 ipm*
Scanning Modes:	Black and White, Grayscale, Color
Optical Resolution:	600 dpi
Interface:	Hi-Speed USB 2.0
Feeder Capacity:	50 Sheets
Daily Duty Cycle:	Approximately 1,000 Scans
Warranty:	One-Year Limited Warranty

Canon Advantages

- Uniquely equipped with Ultrasonic Double-Feed Detection
- Flexible document handling for batch or ID card scanning
- Customizable Scan-to-Job buttons for efficient, one-touch operation
- 3-Dimensional Color Correction technology for accurate color reproduction
- Ultra-compact, portable design, and lightweight at only 4 lb.
- Folio Mode for occasional 11" x 17" scanning
- Long Document Mode for documents up to 39" long

Bundled Software

- ISIS®/TWAIN Drivers
- Canon CapturePerfect® 3.0
- Adobe® Acrobat® 8.0 Standard

Item Code

0080B002 DR-2580C

Optional Accessories and Service

0106B001	Full-Size Flatbed Unit for DR-2580C
0106B003	Half Letter-Sized Flatbed Unit for DR-2580C
0434B003	Barcode Module II
0676V383	Carrying Case
0106B002	Exchange Roller Kit for DR-2580C
0106B005	Two-Year CarePAK (Exchange Program) for DR-2580C

* Examples based on typical settings, rated in pages/images per minute with letter-sized documents at 200 dpi unless specified. Actual processing speeds may vary based on PC performance and application software.



DR-3080CII



SIMPLE AND RELIABLE SCANNING TECHNOLOGY

Key Features

Scanning Speeds:	Up to 32 ppm or 64 ipm*
Scanning Modes:	Black and White, Grayscale, Color
Optical Resolution:	300 dpi
Interface:	Hi-Speed USB 2.0, SCSI-III
Feeder Capacity:	100 Sheets
Daily Duty Cycle:	Approximately 4,500 Scans
Warranty:	90-Day Limited Warranty

Canon Advantages

- Reliable feeding of mixed-document batches
- Fast OCR scanning and searchable PDF creation
- Rugged and durable design for departmental scanning
- Folio Mode for occasional 11" x 17" scanning
- Long Document Mode for documents up to 39" long

Bundled Software

- ISIS®/TWAIN Drivers
- Canon CapturePerfect® 3.0
- Adobe® Acrobat® 8.0 Standard

Item Code

9673A002 DR-3080CII

Optional Accessories

3649A001	Endorser ED-500
3649A003	Die Drum B110 with 8-Digit Dater
6331A001	Ink Roller, Black
6334A001	Ink Roller, Red
6333A001	Ink Roller, Purple
6332A001	Ink Roller, Green
0134V880	DR-3080CII Soft Carrying Case
0134V882	DR-3080CII Hard Carrying Case
6915A001	Exchange Roller Kit 500K for DR-3080CII
6915A002	Exchange Roller Kit 1,000K for DR-3080CII

* Examples based on typical settings, rated in pages/images per minute with letter-sized documents at 200 dpi unless specified. Actual processing speeds may vary based on PC performance and application software.



DR-4010C



HIGH-PERFORMANCE DESKTOP SCANNING

Key Features

Scanning Speeds:	Up to 42 ppm or 84 ipm*
Scanning Modes:	Black and White, Grayscale, Color
Optical Resolution:	600 dpi
Interface:	Hi-Speed USB 2.0, SCSI-III
Feeder Capacity:	100 Sheets
Daily Duty Cycle:	Approximately 5,000 Scans
Warranty:	One-Year Limited Warranty

Canon Advantages

- 3-line CMOS contact image sensor technology ensures super quality image
- Flexible document handling from ID cards up to 8-1/2" x 14" paper sizes
- Three programmable Scan-to-Job buttons for easy, one-touch operation
- Extra-wide image sensor ensures that even skewed documents are scanned in full
- Automatic Color Detection for mixed batch of color and black-and-white documents

Bundled Software

- ISIS®/TWAIN Drivers
- Canon CapturePerfect® 3.0
- Adobe® Acrobat® 8.0 Standard

Item Code

1321B002 DR-4010C

Optional Accessories

0434B003	Barcode Module II
1921B001	Exchange Roller Kit for DR-4010C
1921B002	One Year CarePAK (Exchange Program) for DR-4010C
1921B003	Two Year CarePAK (Exchange Program) for DR-4010C

* Examples based on typical settings, rated in pages/images per minute with letter-sized documents at 200 dpi unless specified. Actual processing speeds may vary based on PC performance and application software.



DR-5010C



FAST, FLEXIBLE PRODUCTION SCANNING

Key Features

Scanning Speeds:	Up to 50 ppm 100 ipm*
Scanning Modes:	Black and White, Grayscale, Color
Optical Resolution:	600 dpi
Interface:	Hi-Speed USB 2.0, SCSI-III
Feeder Capacity:	100 Sheets
Daily Duty Cycle:	Approximately 6,000 Scans
Warranty:	90-Day Limited Warranty

Canon Advantages

- Flexible document handling from ID cards up to 11" x 17" paper sizes
- Ultra-fast, production-level scanning speeds, even in color
- Advanced image processing features, including High-Speed Text Enhancement, Custom Color Dropout, and Multistream™
- 3-Dimensional Color Correction technology for accurate color reproduction
- Equipped with Ultrasonic Double-Feed Detection for reliable feeding
- Long Document Mode for documents up to 39" long

Bundled Software

- ISIS®/TWAIN Drivers
- Canon CapturePerfect® 3.0
- Adobe® Acrobat® 8.0 Standard

Item Code

9842A002 DR-5010C

Optional Accessories

0837B001	Imprinter 50F
0837B002	Imprinter 50B
0836B001	Ink Tank 50 Black
0836B002	Ink Tank 50 Red
0434B003	Barcode Module II
0434B002	Exchange Roller Kit for DR-5010C

* Examples based on typical settings, rated in pages/images per minute with letter-sized documents at 200 dpi unless specified. Actual processing speeds may vary based on PC performance and application software.



DR-7080C



A WINNING COMBINATION OF TECHNOLOGY

Key Features

Scanning Speeds:	Up to 70 ppm or 36 ipm*
Scanning Modes:	Black and White, Grayscale, Color
Optical Resolution:	600 dpi
Interface:	Hi-Speed USB 2.0, SCSI-III
Feeder Capacity:	100 Sheets
Daily Duty Cycle:	Approximately 6,000 Scans
Warranty:	90-Day Limited Warranty

Canon Advantages

- Leverages Canon's industry-leading technology of both award-winning imageRUNNER® and DR-Series Scanner products
- Combination Flatbed and ADF scanning capabilities for scanning a variety of sources from books to 11" x 17" documents
- Easy-to-use control panel that ensures effortless operation
- Built-in MultiStream™ technology to generate multiple images, simultaneously from a single scan
- Long Document Mode for documents up to 39" long

Bundled Software

- ISIS®/TWAIN Drivers
- Canon CapturePerfect® 3.0

Item Code

9150A002 DR-7080C

Optional Accessories

9664A002 Exchange Roller Kit for DR-7080C

* Examples based on typical settings, rated in pages/images per minute with letter-sized documents at 200 dpi unless specified. Actual processing speeds may vary based on PC performance and application software.

DR-9080C/7580



A NEW OUTLOOK ON AFFORDABLE PRODUCTION SCANNING

Key Features

Scanning Speeds	
DR-9080C:	Up to 90 ppm or 180 ipm*
DR-7580:	Up to 75 ppm or 150 ipm*
Scanning Modes	
DR-9080C:	Black and White, Grayscale, Color
DR-7580:	Black and White
Optical Resolution:	600 dpi
Interface:	Hi-Speed USB 2.0, SCSI-III
Feeder Capacity:	500 Sheets
Daily Duty Cycle:	Approximately 10,000 Scans
Warranty:	90-Day Limited Warranty

Canon Advantages

- Automatic adjustment to reliably handle each document size or thickness in a mixed batch
- Unique on-board Staple Detection feature
- Equipped with Ultrasonic Double-Feed Detection for reliable feeding
- Hardware and software skew correction capabilities
- Built-in MultiStream™ technology to generate multiple images, simultaneously, from a single scan

Bundled Software

- ISIS®/TWAIN Drivers
- Canon CapturePerfect® 3.0

Item Code

8926A002	DR-9080C
0640B002	DR-7580

Optional Accessories

3650A005	Endorser ED-600
3650A006	Die Drum 300 with 8-Digit Dater
6331A001	Ink Roller, Black
6334A001	Ink Roller, Red
6333A001	Ink Roller, Purple
6332A001	Ink Roller, Green
8927A001	Imprinter
8927A002	Hard Counter
0434B003	Barcode Module II
8927A004	Exchange Roller Kit

* Examples based on typical settings, rated in pages/images per minute with letter-sized documents at 200 dpi unless specified. Actual processing speeds may vary based on PC performance and application software.

WORKGROUP



DR-1210C



DR-2050C






DR-2050SP

	DR-1210C	DR-2050C	DR-2050SP
Canon SKU	1211B002	0433B002	2099B002
Type	Flatbed with ADF	Sheetfed	Sheetfed
Monochrome Speed (200 dpi/LTR/portrait)	12 ppm (300 dpi)	20 ppm/40 ipm	20 ppm/40 ipm
Color Speed (150 dpi/LTR/portrait)	12 ppm (300 dpi)	10 ppm/20 ipm	10 ppm/20 ipm
Output Resolution	100–600 dpi	100–600 dpi	100–600 dpi
Optical Resolution	600 dpi	600 dpi	600 dpi
ADF Capacity	35 Sheets	50 Sheets	50 Sheets
Paper Size Minimum (ADF) Maximum	5.8" x 3.9" 8.5" x 14"	2.2" x 2.8" 8.5" x 14"	2.2" x 2.8" 8.5" x 14"
Interface	USB 2.0	USB 2.0	USB 2.0
Dimensions (H x W x D)	6.5" x 18.5" x 15"	7.7" x 11.9" x 3.9"	7.7" x 11.9" x 3.9"
Weight	13.4 lb.	5 lb.	5.6 lb.
Bundled Software	CapturePerfect 3.0 Adobe Acrobat 8.0 OmniPage SE 4 Biz Card Reader	CapturePerfect 3.0 Adobe Acrobat 8.0 OmniPage SE 4	CapturePerfect 3.0 Adobe Acrobat 8.0 OmniPage SE 4
Daily Duty Cycle	400 Scans	700 Scans	700 Scans
Options	Feed Roller Separation Pad Two-Year CarePAK	Exchange Roller Carrying Case Two-Year CarePAK	Exchange Roller Carrying Case Two-Year CarePAK

All specifications and availability subject to change without notice.

	DEPARTMENTAL			
				
DR-2580C	DR-3080CII	DR-4010C	DR-5010C	
0080B002	9673A002	1321B002	9842A002	
Sheetfed	Sheetfed	Sheetfed	Sheetfed	
25 ppm/50 ipm	32 ppm/64 ipm	42 ppm/84 ipm	50 ppm/100 ipm	
17 ppm/32 ipm	10 ppm/20 ipm (200 dpi)	42 ppm/84 ipm (200 dpi)	50 ppm/100 ipm	
100–600 dpi	100–300 dpi*	100–600 dpi	100–600 dpi	
600 dpi	300 dpi	600 dpi	600 dpi	
50 Sheets	100 Sheets	100 Sheets	100 Sheets	
2.1" x 2.8" 8.5" x 14"	2.2" x 2.8" 10.1" x 14.3"	2.1" x 2.8" 8.6" x 14"	2.1" x 2.8" 11.8" x 17"	
USB 2.0	USB 2.0/SCSI-III	USB 2.0/SCSI-III	USB 2.0/SCSI-III	
3.2" x 11.9" x 6.7"	7.5" x 13.5" x 11"	7.3" x 12.5" x 10.9"	7.5" x 15.6" x 12.3"	1
4.2 lb.	17.8 lb.	14.1 lb.	23 lb.	
CapturePerfect 3.0 Adobe Acrobat 8.0	CapturePerfect 3.0 Adobe Acrobat 8.0	CapturePerfect 3.0 Adobe Acrobat 8.0	CapturePerfect 3.0 Adobe Acrobat 8.0	C
1,000 Scans	4,500 Scans	5,000 Scans	6,000 Scans	
Full or Half Size Flatbed Unit Barcode Module II Exchange Roller Carrying Case Two-Year CarePAK	Endorser Exchange Roller Carrying Case	Barcode Module II Exchange Roller	Imprinter Barcode Module II Exchange Roller	

PRODUCTION	NETWORK SCANNER	
		
DR-7080C	DR-9080C/7580	ScanFront 220/220P
9150A002	8926A002/0640B002	2263B002/2338B002
Flatbed with ADF	Sheetfed	Sheetfed
70 ppm/36 ipm	90 ppm/180 ipm 75 ppm/150 ipm	26 ppm/35 ipm
70 ppm/36 ipm	85 ppm/140 ipm	16 ppm/16 ipm
100–600 dpi	100–600 dpi	100–600 dpi
600 dpi	600 dpi	600 dpi
100 Sheets	500 Sheets	50 Sheets
5.5" x 5" 12" x 17"	2.2" x 2.8" 12" x 17"	2" x 2.76" 8.5" x 14"
USB 2.0/SCSI-III	USB 2.0/SCSI-III	10Base-T/100Base-TX LAN 2 x USB 2.0 / 2 x PS/2
1.8" x 22.6" x 23.7"	12.2" x 18.1" x 20.7"	6.22" x 12.2" x 9.21"
74 lb.	55 lb.	7.5 lb.
CapturePerfect 3.0	CapturePerfect 3.0	N/A
6,000 Scans	10,000 Scans	1,000 Scans
Exchange Roller	Endorser Imprinter Barcode Module II Hard Counter Exchange Roller	Exchange Roller Kit Two-Year CarePAK

* 100 dpi = color only

ADVANCED IMAGE PROCESSING FEATURES AVAILABLE ON MOST DR-SERIES SCANNERS

User Preference Registration: Up to 100 user preference profiles can be programmed and stored for fast, easy access to frequently used settings.

Advanced Text Enhancement: Clearly scans text printed on a dark background and text written in faint pencil.

Skip Blank Page: Automatically removes blank pages from mixed batches with two-sided and one-sided documents.

Pre-Scan Function: Adjust the contrast and brightness of a pre-scanned image and then send the adjusted image to the application software, without re-scanning the document.

Auto Page Size Detection: Automatically detects the size of a scanned document and eliminates any unnecessary space around the edges of the image when storing it, even if a document is of irregular size.

Deskew: Automatically straightens an image if the document was loaded askew.

Text Orientation Recognition: Identifies the orientation of characters in a document and rotates the image so the orientation of the scanned characters is straight.

Color Dropout: Specify RGB colors for the scanner to omit from scanned images.

Punch-Hole Removal: Whites-out black spots left when scanning documents that have binder or punch holes.

Additional Image Processing Features:

- Scan Area Setting
- Batch Separation Options
- Border Removal
- Edge Enhancement
- Preset Gamma Curve Function

DR-SERIES

HIGH-SPEED DOCUMENT SCANNERS

EFFICIENT AND AFFORDABLE IMAGING SOLUTIONS

Canon DR-Series Scanners satisfy a wide variety of document management needs and budgets with a full-range of workgroup, departmental, and production scanning solutions. Reliable feeding and advanced image processing technology enable you to reduce operational costs and consistently produce high-quality images—regardless of source material.





1-800-OK-CANON
www.usa.canon.com

Canon U.S.A., Inc.
One Canon Plaza
Lake Success, NY 11042

As an ENERGY STAR® Partner, Canon U.S.A., Inc. has determined that the DR5010C/4010C/2580C/2050SP/2050C/1210C models meet the ENERGY STAR guidelines for energy efficiency. ENERGY STAR and the ENERGY STAR mark are registered U.S. marks. Adobe and Acrobat are registered trademarks of Adobe Systems Incorporated in the United States and/or other countries. CapturePerfect is a registered trademark of Canon Electronics Inc. CANON and IMAGERUNNER are registered trademarks of Canon Inc. in the United States and may also be registered trademarks or trademarks in other countries. CAREPAK is a registered trademark of Canon U.S.A., Inc. IMAGEANYWARE is a trademark of Canon. All referenced product names and other marks are trademarks of their respective owners. Specifications and availability subject to change without notice. ©2007 Canon U.S.A., Inc. All rights reserved.

0101W097
0807-HSS-28.5M-LNR



PRINTED ON RECYCLED
PAPER IN THE U.S.A.

Capture Perfect